

# Virtual Solution Box (VSB)

## Netapp Support

(12.11.2007, for use with VSB v3.5.x)

## Table of contents

Prerequisites	1
How to enable Netapp snapshotting with VSB	2

## Prerequisites

When VSB backs up or replicates a disk, a snapshot is taken on the ESX server. After the backup finishes, the snapshot is deleted, ESX consolidates the snapshot with the base disk:

- Create a snapshot of the virtual machine
- Backup or replicate the disks
- Delete (consolidate) the virtual machine snapshot

A Netapp Storage system uses a WAFL Filesystem, which handles snapshots much more efficiently. Version 3.5 of Virtual Solution Box can create a Snapshot on the Netapp storage system before backing up a disk:

- Create a snapshot of the NFS volume containing the NFS export with the virtual disks
- Backup or replicate the disks
- Delete the snapshot on the Netapp filer

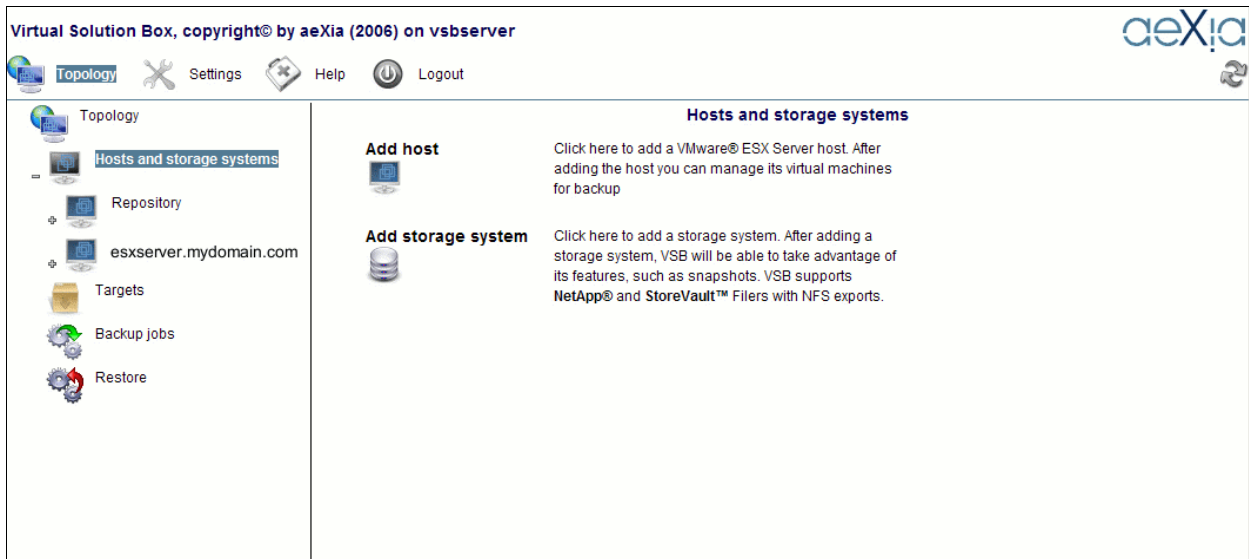
A snapshot of a Volume is visible in the directory “.snapshot” of the NFS export. Presenting a snapshot of a LUN is much more complicated, Version 3.5 only supports snapshots of volumes containing NFS exports, not LUNs.

These are the prerequisites:

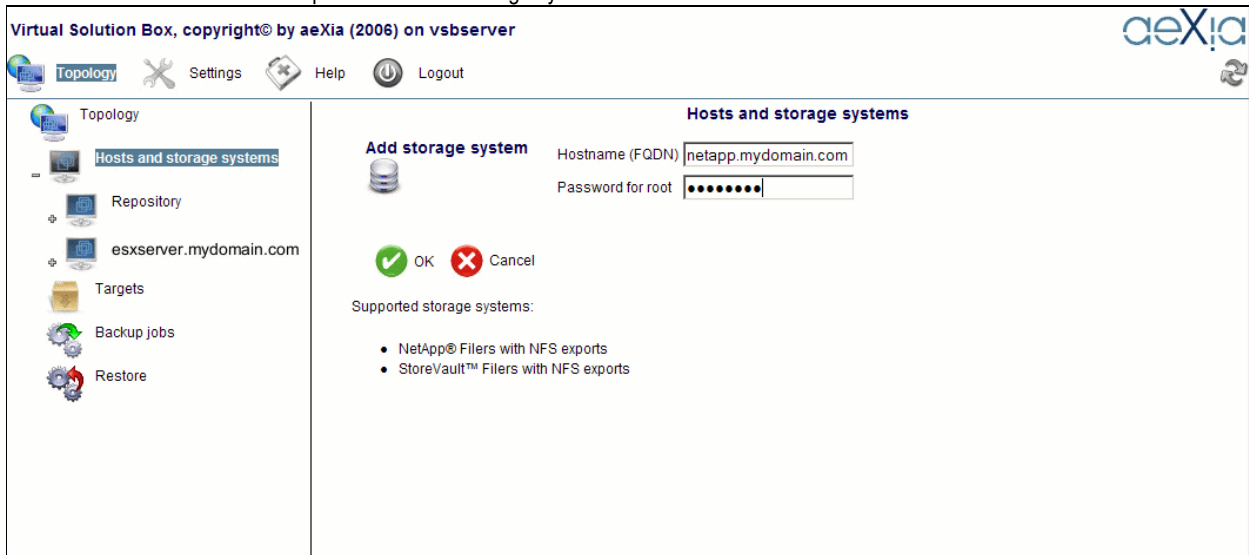
- Netapp FAS or a Storevault S500 filer
- A working network between the Virtual Solution Box and the ESX servers and the Netapp filer.
- One or more volumes with snapshotting enabled and enough spare space on the volumes for snapshots. These volumes should be presented using NFS.

## How to enable Netapp snapshotting with VSB

To enable Netapp snapshotting with VSB, open the topology view of VSB and click on “Add storage system”.



Now enter the name and the root password of the storage system:



After adding the storage system, you can access it in the tree structure. You should add additional IP Adresses and names as shown. These IPs (here 192.168.135.40) are the IPs or names to which the ESX server connects. If these are not correct, not volumes with NFS exports are listed.

Topology Settings Help Logout

Topology

- Hosts and storage systems
- Repository
  - esxserver.mydomain.com
  - netapp.mydomain.com**
- Targets
- Backup jobs
- Restore

### Storage System: netapp.mydomain.com

**Remove storage system** Click here to remove this storage system from VSB management. Features such as snapshots will then not be used by VSB any longer.

**Basic info**

System Name: eos  
 Vendor: NetApp  
 Model: FAS2020  
 ONTAP Version: NetApp Release 7.2.2L1: Fri Jun 8 02:23:52 PDT 2007  
 Licenses: a\_sis cifs iscsi nearstore\_option nfs snapmirror snaprestore  
 IP addresses and names of this storage system (seperated by ",")  
 These are the names and /Ps that you enter in the VI client when connecting the NAS storage. 192.168.1.4

OK

**NFS Exports**

Name of volume	Name of nfs	uuid of nfs	Path on storage system	Size [GB]	Available [GB]	Use storage system snapshot instead of VMware snapshot
vol1	nfs1	70357fc1-aade4c14	/vol/vol1	200	46	<input checked="" type="checkbox"/>
vol5	nfs5	635e9fea-f47f27d1	/vol/vol5	80	14	<input checked="" type="checkbox"/>

OK

**Snapshots created by VSB**

Name of volume	Name of snapshot	Created

Copyright© by aeXia (2006)

Choose the volumes on which you want to enable storage system snapshots by selecting them with the checkbox.

That is all, if you run a job now, the following line will appear in the log:

*“created snapshot on the storage system”*